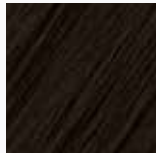
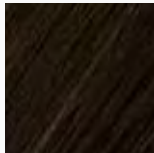


### KLEUREN VOOR: HAARWERKEN EN HAARSTUKKEN

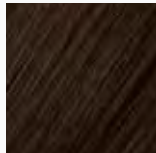
#### STANDARD COLORS



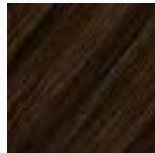
**1010  
ESPRESSO**



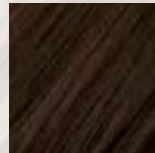
**2040  
CAFÉ**  
Donker  
koffiebruin met  
subtiële  
high-lights



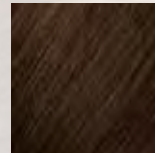
**2060  
CAFFEINE**  
Chocoladebruin



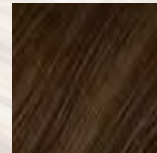
**3030  
MOCHA LATTE**  
Donkerbruin  
met subtiële  
high-lights



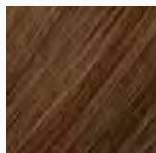
**3050  
TEA**  
Kastanjebruin  
met low-lights



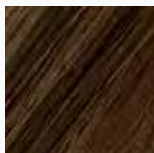
**3060  
LATTE**  
Licht  
koffiebruin



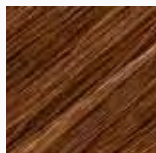
**5005  
MACCHIATO**  
Lichtbruin met  
high-lights



**5030  
CARAMEL  
LATTE**  
Donkerblond  
met caramel  
kleurige high-  
lights

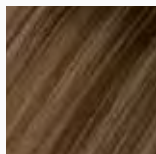


**5035  
CAPPUCCINO**  
Lichtbruin met  
high-lights en  
natuurlijke root  
color



**15040  
CINNAMON**  
Kaneel

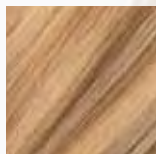
#### SPECIAL COLORS



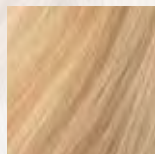
**5045  
CHAI LATTE**  
Middenblond met  
low-lights en  
natuurlijke root  
color



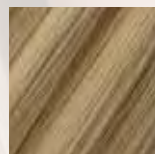
**5055  
CRÈME BRÛLÉE**  
Blond met  
low-lights



**6020  
IRISH CREAM**  
Lichtblond met  
askleurige  
low-lights



**10030  
CHARDONNAY**  
Lichtblond met  
caramel  
kleurige  
low-lights



**11035  
VIENNA**  
Lichtblond met  
low-lights en  
natuurlijke root  
color

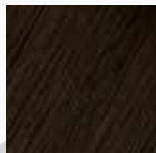
Standard colors

1010 - 2040 - 2060 - 3030 - 3050 - 3060 - 5005 - 5030 - 5035 - 15040

Special colors

5045 - 5055 - 6020 - 10030 - 11035

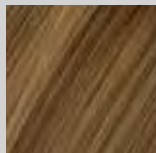
#### LUXURY COLORS GRANDEUR



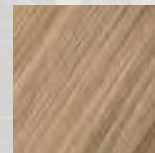
**3051  
EMPRESS**  
Kastanjebruin  
met donkere  
root color



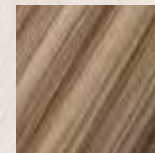
**3080  
DUCHESS**  
Lichtbruin met  
donkere root  
color



**5050  
ARISTOCRAT**  
Donkerblond  
met donkere  
root color



**10031  
MAJESTY**  
Honingblond met  
honingkleurige  
lowlights en  
root color



**11031  
ROYALTY**  
Lichtblond met  
low-lights en  
natuurlijke root  
color

Houd er rekening mee dat deze kleuren kunnen afwijken van de daadwerkelijke kleur.  
Maak voor de juiste keuze gebruik van de Follea kleuren ring.